



TOSHIBA

FINDING YOUR TCPIP ADDRESS

All current A4 and A3 Toshiba devices



Purpose

This guide outlines the different methods to recover the IP address of a Toshiba device.

To keep this document uniform, it will focus on printing pages from your printer / MFD that will show all of your device's network information.

Models Supported

| |
|---------------------------------------------------------------------------------------------------------|
| A4 Desktop Series I |
| Colour |
| e-STUDIO 305CS / 305CP |
| Monochrome |
| e-STUDIO 385P / 385S / 525P |
| A4 Desktop Series II |
| Colour |
| e-STUDIO 338CS / 388CS / 388CP / 389CS / 479CS |
| Monochrome |
| e-STUDIO 408S / 408P / 409S / 409P / 478S / 528P |
| e-BRIDGE Next Series III |
| Colour |
| e-Studio 2020AC / 2525AC / 3025AC / 3525AC / 4525AC / 5525AC / 6525AC |
| Mono |
| e-Studio 2528A / 5525A / 6528A |
| e-BRIDGE Next Series II |
| Colour |
| e-Studio 2010AC / 2515AC / 3015AC / 3515AC / 4515AC / 5015AC / 5516AC / 6516AC / 7516AC / 330AC / 400AC |
| Mono |
| e-Studio 2518A / 5518A / 7518A / 8518A |
| e-BRIDGE Next Series I |
| Colour |
| e-Studio 2000AC / 2505AC / 3005AC / 3505AC / 4505AC / 5005AC / 5506AC / 6506AC / 7506AC |
| Mono |
| e-Studio 2508A / 3508A / 4508A / 3508LP / 4508LP / 5508A / 7508A / 8508A |

Finding your IP Address

A4 Desktop Series II

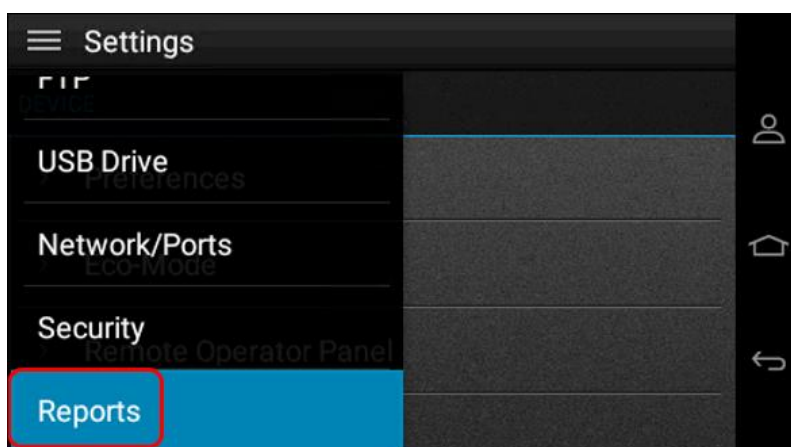
1. The device's IP Address will normally be set on Run up, and will appear at the top of the screen as shown below



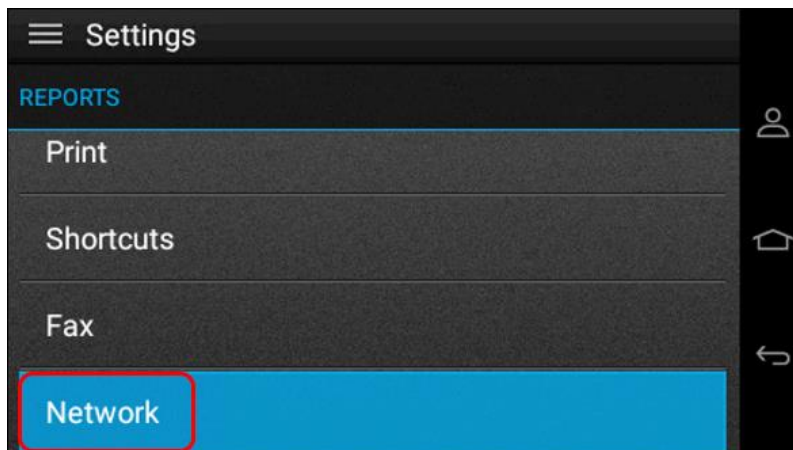
2. To print a Network report, press "Settings"



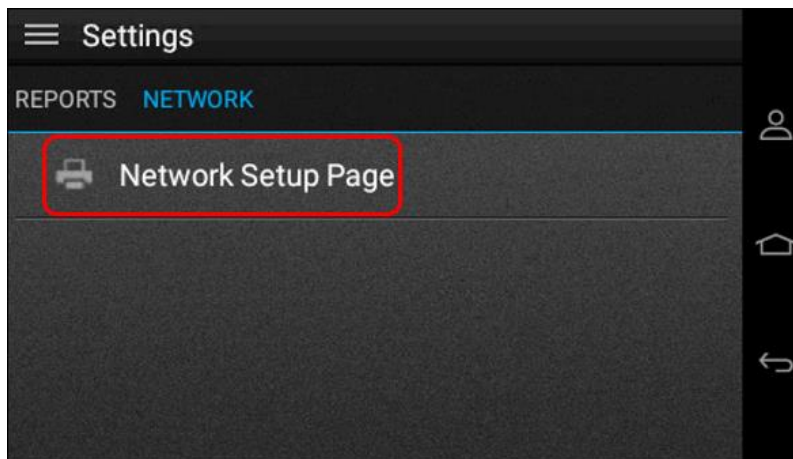
3. Scroll down until you see "Reports" and select



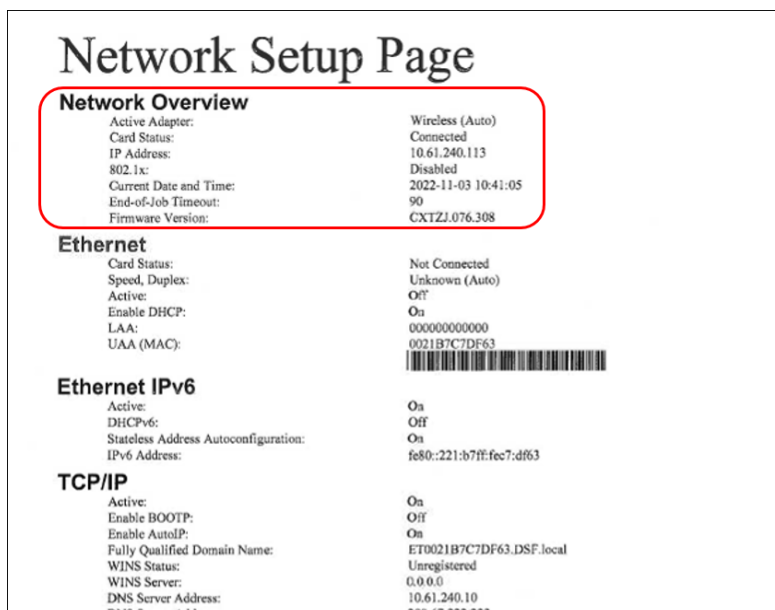
- Then scroll down until you see "Network", and select



- Then print a "Network Setup Page"



- Network Setup Page sample below (If not connected to Network, this will not be shown)



A4 Desktop Series I

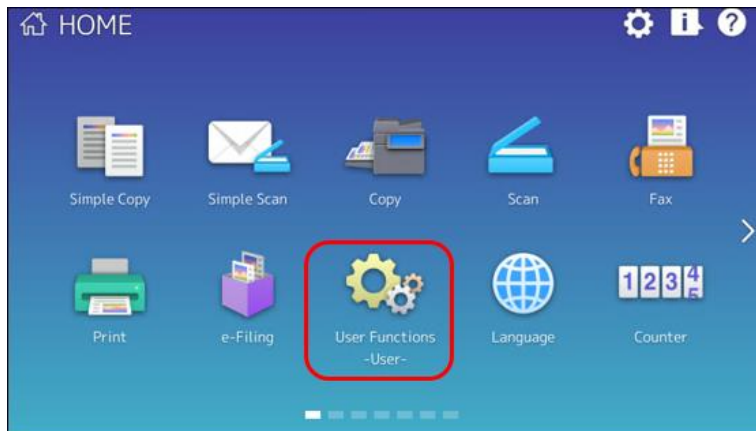
1. Similar to A4 Desktop Series II devices, the IP Address on A4 Desktop Series I models is displayed on the top of the screen
2. Press the “Menu” button on the bottom right-hand corner



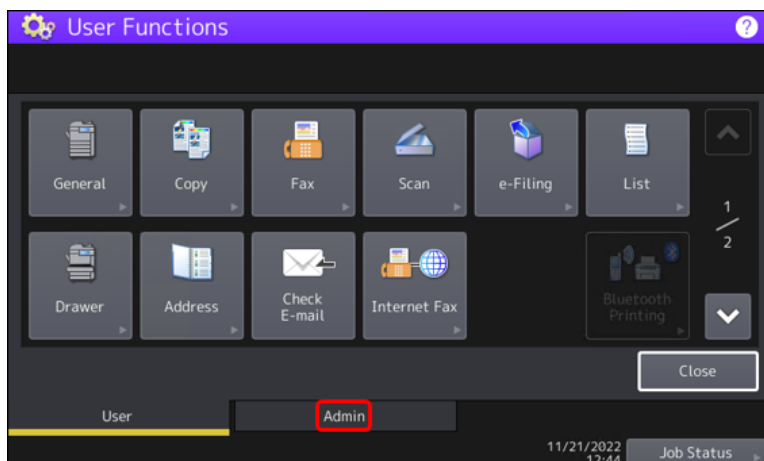
3. Scroll down to “Reports” and enter menu
4. Choose “Network Report” and then “Print Network Report”
5. These reports are identical between all A4 Desktop Series I and Series II models.

eBN I & II Models

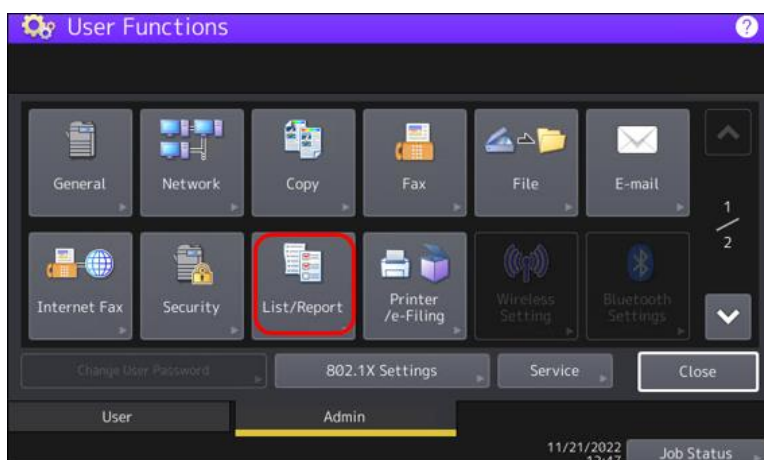
1. From the Control Panel, press "User Functions User"



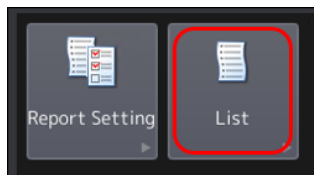
2. Press the "Admin" tab at the bottom. Login with the default password of "123456"



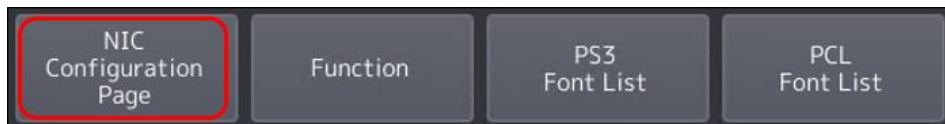
3. Choose "List/Report"



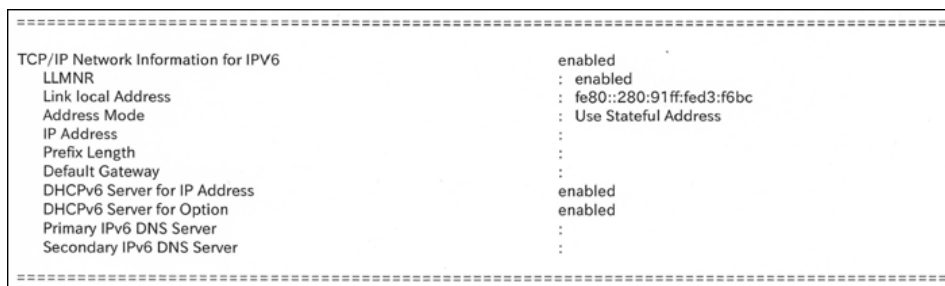
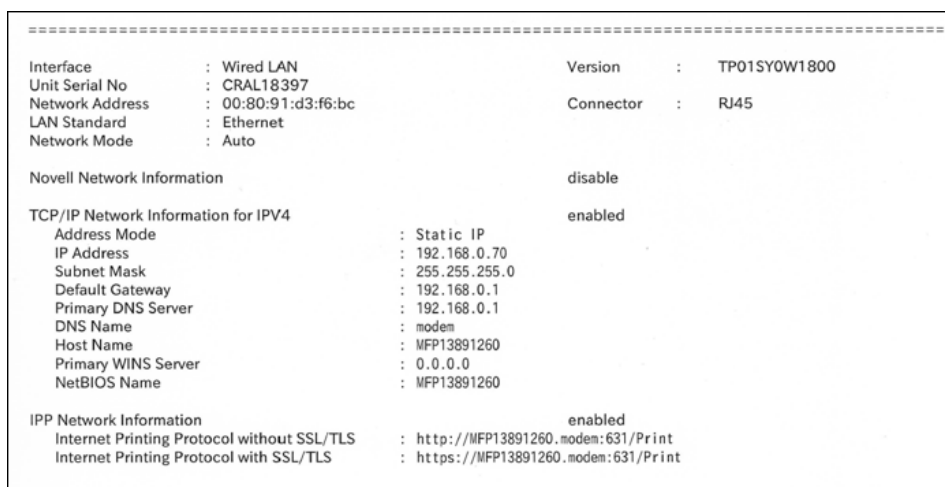
- Under "List/Report" choose "List"



- Choose "NIC Configuration Page"

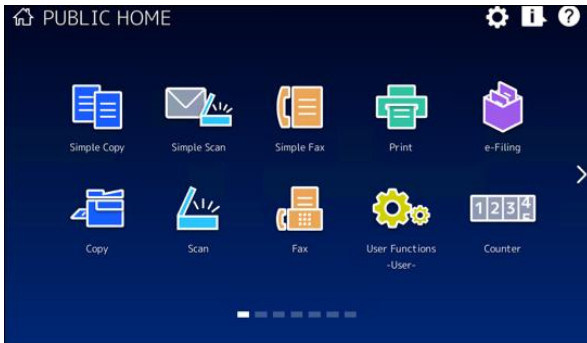


- This will give you the print-out below



eBN III Models

Exactly the same steps as eBN I and II models, only the icons have been updated



If you have a Secondary NIC setup, this will be shown as in the print-out below. Example of eBN III NIC Configuration page

| | | | |
|--------------------------------------------|-------------------------------------------|-----------|--------------|
| Interface | Wired LAN | Version | TC11SDOW1725 |
| Unit Serial No | CSIL02608 | | |
| Network Composition | Primary | | |
| Network Address | 00:80:91:d6:ad:4e | Connector | RJ45 |
| LAN Standard | Ethernet | | |
| Network Mode | Auto | | |
| Novell Network Information | disable | | |
| TCP/IP Network Information for IPv4 | enabled | | |
| Address Mode | : Dynamic | | |
| IP Address | : 10.61.240.90 | | |
| Subnet Mask | : 255.255.255.0 | | |
| Default Gateway | : 10.61.240.1 | | |
| Primary DNS Server | : 10.61.240.10 | | |
| DNS Name | : DSF-local | | |
| Host Name | : WFP14069070 | | |
| Primary WINS Server | : 0.0.0.0 | | |
| NetBIOS Name | : WFP14069070 | | |
| IPP Network Information | enabled | | |
| Internet Printing Protocol without SSL/TLS | : http://WFP14069070.DSF.local:631/Print | | |
| Internet Printing Protocol with SSL/TLS | : https://WFP14069070.DSF.local:631/Print | | |

| | |
|-------------------------------------|----------------------------|
| Network Composition | : Primary |
| TCP/IP Network Information for IPv6 | enabled |
| LLMNR | : enabled |
| Link local Address | : fe80::280:91ff:fed6:ad4e |
| Address Mode | : Use Stateful Address |
| IP Address | : |
| Prefix Length | : |
| Default Gateway | : |
| DHCPv6 Server for IP Address | : enabled |
| DHCPv6 Server for Option | : enabled |
| Primary IPv6 DNS Server | : |
| Secondary IPv6 DNS Server | : |

| | | | |
|--------------------------------------------|-------------------------------------------|-----------|--------------|
| Interface | Wired LAN2 | Version | TC11SDOW1725 |
| Unit Serial No | CSIL02608 | | |
| Network Composition | Secondary | | |
| Network Address | b4:b0:24:15:78:85 | Connector | RJ45 |
| LAN Standard | Ethernet | | |
| Network Mode | Auto | | |
| TCP/IP Network Information for IPv4 | enabled | | |
| Address Mode | : Dynamic | | |
| IP Address | : 192.168.0.100 | | |
| Subnet Mask | : 255.255.255.0 | | |
| Default Gateway | : 192.168.0.1 | | |
| Primary DNS Server | : 192.168.0.1 | | |
| Host Name | : WFP14069070 | | |
| IPP Network Information | enabled | | |
| Internet Printing Protocol without SSL/TLS | : http://WFP14069070.DSF.local:631/Print | | |
| Internet Printing Protocol with SSL/TLS | : https://WFP14069070.DSF.local:631/Print | | |

| | |
|-------------------------------------|-----------------------------|
| Network Composition | : Secondary |
| TCP/IP Network Information for IPv6 | enabled |
| LLMNR | : enabled |
| Link local Address | : fe80::b6b0:24ff:fe15:7885 |
| Address Mode | : Use Stateful Address |
| IP Address | : |
| Prefix Length | : |
| Default Gateway | : |
| DHCPv6 Server for IP Address | : enabled |
| DHCPv6 Server for Option | : enabled |
| Primary IPv6 DNS Server | : |
| Secondary IPv6 DNS Server | : |