



TOSHIBA

INSTALL SSL CERTIFICATE ON MFD

Upgrading your MFD Security Certificate



Scope of Disclosure	Public
Classification	Standard
Handling	Do not copy or transfer
Document Type	Guide

Purpose

The purpose of this guide is to show the steps involved in certificate creation and installation. A device certificate is required if you want to enable SSL/TLS for HTTP setting, IPP Print Service, Web Services Print and other services.

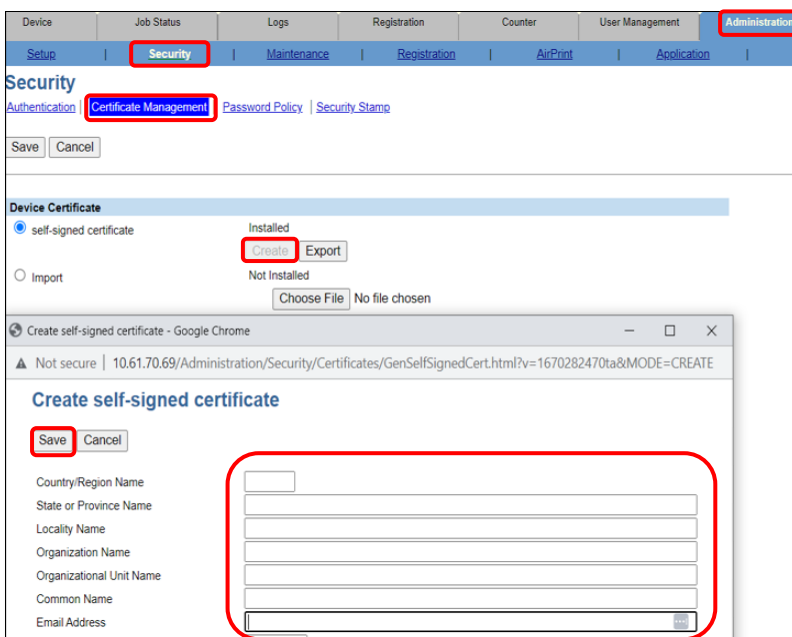
Device List

The procedure is only applicable on e-Bridge Next Generation Devices

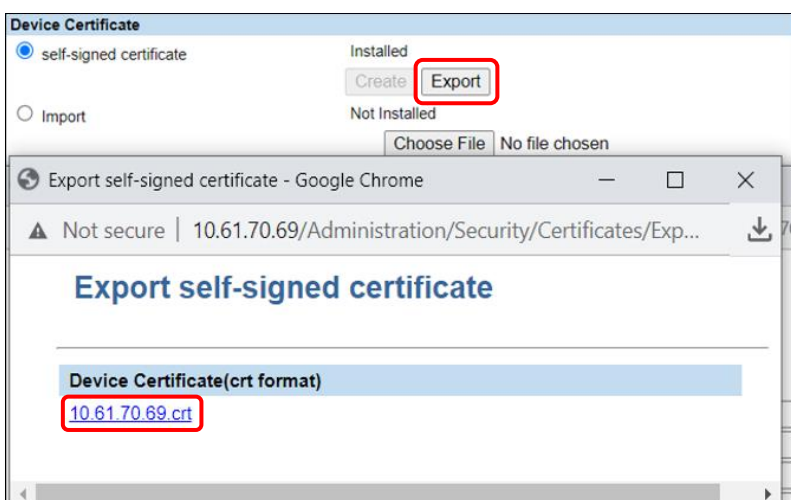
e-BRIDGE Next Series III	
Colour	
<ul style="list-style-type: none"> ▪ e-STUDIO2020AC / e-STUDIO2021AC ▪ e-STUDIO2525AC / 3025AC / 3525AC / 4525AC / 5025AC / 6525AC ▪ e-STUDIO5516AC / 6516AC / 7516AC 	
Monochrome	
<ul style="list-style-type: none"> ▪ e-STUDIO2528A / 5528A / 6528A ▪ e-STUDIO7529A / 9029A 	
e-BRIDGE Next Series II	
Colour	
<ul style="list-style-type: none"> ▪ e-STUDIO2010AC ▪ e-STUDIO2515AC / 3015AC / 3515AC / 4515AC / 5015AC ▪ e-STUDIO5516AC / 6516AC / 7516AC ▪ e-STUDIO400AC / 330AC 	
Monochrome	
<ul style="list-style-type: none"> ▪ e-STUDIO2518A ▪ e-STUDIO5518A / 7518A / 8518A 	
e-BRIDGE Next Series I	
Colour	
<ul style="list-style-type: none"> ▪ e-STUDIO2000AC ▪ e-STUDIO2505AC / 3005AC / 3505AC / 4505AC / 5005AC ▪ e-STUDIO5506AC / 6506AC / 7506AC 	
Monochrome	
<ul style="list-style-type: none"> ▪ e-STUDIO2508A / 3508A / 4508A ▪ e-STUDIO5508A / 7508A / 8508A ▪ e-STUDIO3508LP / 4508LP 	

Create and install the Certificate

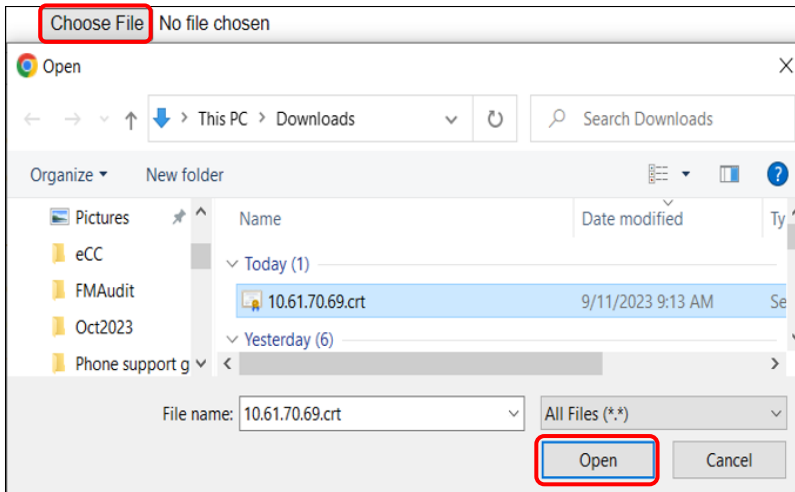
1. Login to the MFD using admin credentials
2. Click the "Administration" tab
3. Click the "Security" menu and "Certificate Management" submenu. The Certificate Management page is displayed
4. Select "self-signed certificate" under "Device Certificate" and click "Create". The Create self-signed certificate page is displayed.
5. Enter the items necessary in the Create self-signed certificate window and click "Save"
6. See screen shot below



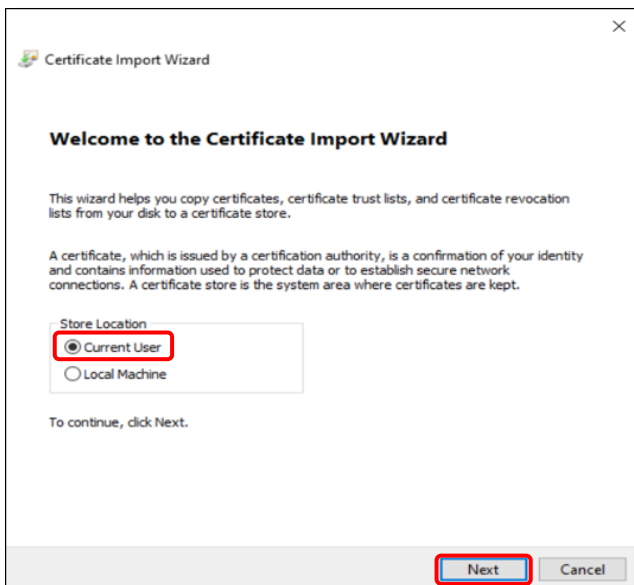
7. Save the settings unputted
8. Click "Export" to get to save the generated certificate



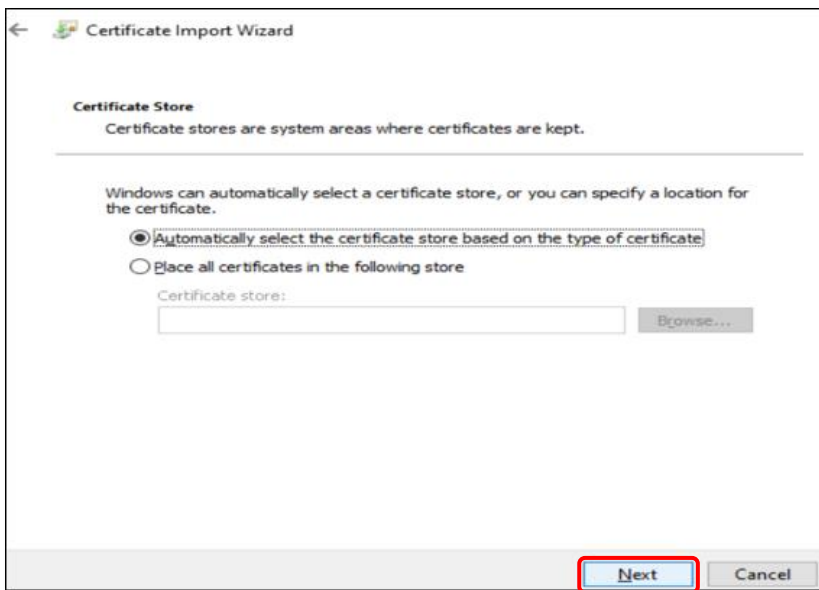
9. Click on the **link** that is displayed under Device Certificate (crt format) to save the certificate to the downloads folder
10. Close the pop-up window after the self-signed certificate is downloaded to the downloads folder
11. Choose "Choose File" and click on the .crt file in the downloads folder. Then click "Open"



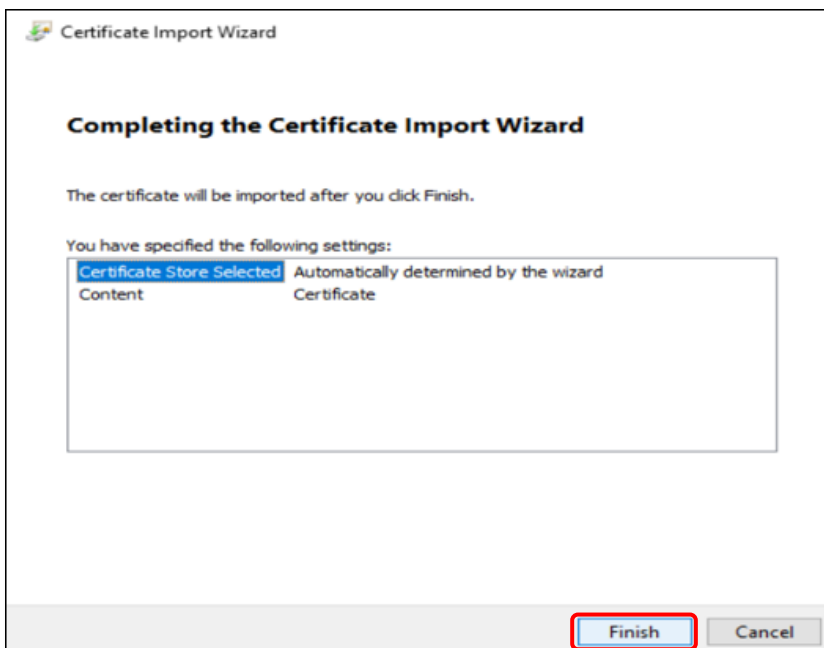
12. Navigate to the downloads folder to install the certificate
13. Click on the generated certificate and right click to get to Install Certificate. Click Install Certificate to get the window as below. Click on "Current User" then click "Next"



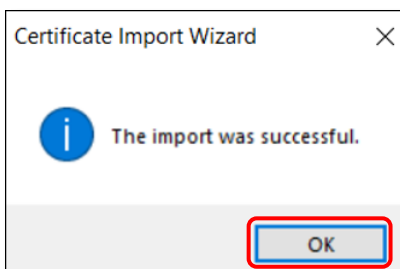
14. Click on radio button below to select certificate



15. Click "Next" again to get to the screen shot below



16. Click "Finish" to import the self-signed certificate. The pop-up window will appear as below



17. You have successfully generated a self-signed certificate for the Copier