

TOSHIBA

Kōdo[®] APPLICATION

FOR MICROSOFT SHAREPOINT ON-PREMISE

- › Upload scanned documents directly to your Microsoft SharePoint on-premise site at the MFP
- › Scan to industry standard documents formats including searchable and editable types
- › Conveniently print documents stored in your Microsoft SharePoint on-premise site at the MFP panel
- › Familiar tablet style interface requires virtually zero training to use
- › Minimal IT support with embedded on-board processing
- › No limit on the number of users or scans

CONVENIENT & EASY-TO-USE

What is Kōdo Application for Microsoft SharePoint on-premise

A safe and convenient embedded application that connects users to their SharePoint on-premise site, directly from the Toshiba MFP touch panel.

Offers a central information repository for users to directly to Microsoft SharePoint via Toshiba's e-STUDIO MFPs.

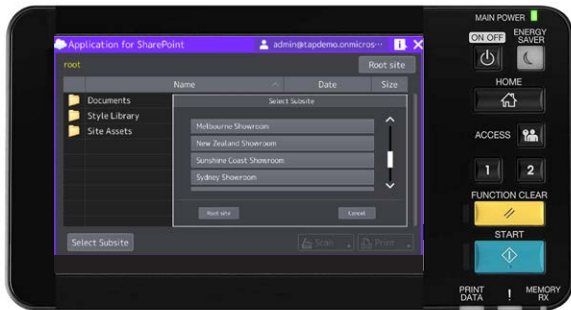
- Store and print documents in folders
- Auto create folders for easy identification by user
- Browse or directly link to SharePoint subsites at the MFP panel
- Supports mandatory entry of SharePoint document library metadata right at the MFP panel

 **TOGETHER
INFORMATION**

SCAN & PRINT MOBILE DOCUMENTS

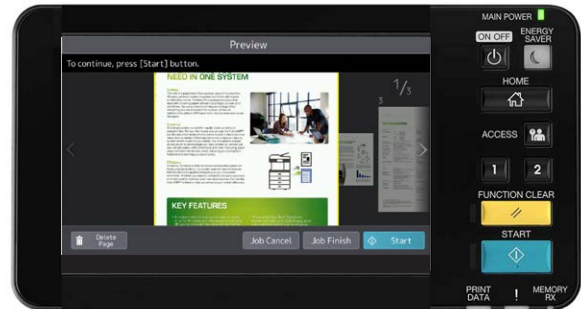
SCANNING MADE EASY

To Scan a document to your SharePoint on premise site, simply select the document type, folder then scan. Also supports mandatory SharePoint document library metadata entry.



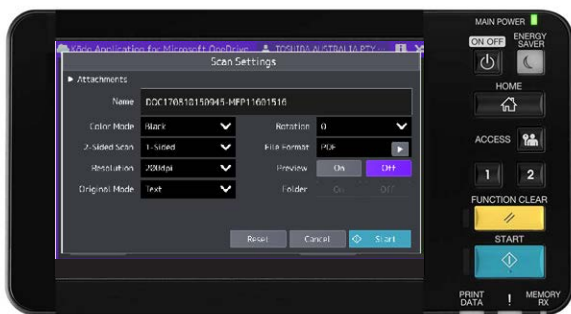
INCREASE ACCURACY

To reduce errors and save time, preview your jobs on the screen and auto correct document orientation, if required, before sending to SharePoint.



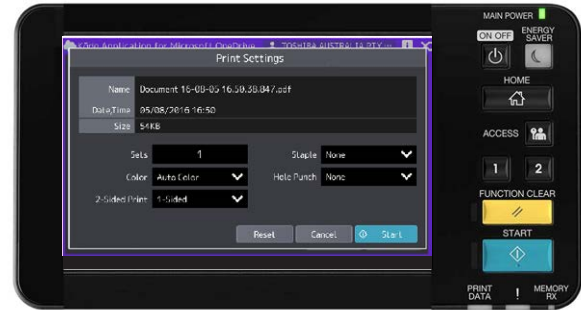
FLEXIBLE SCAN SETTINGS

Conveniently, you can modify scan settings directly from the tablet-like touch screen then mix scanning between the document feeder and glass, as required.



REMOTE PRINTING

To print a document from your SharePoint on premise site, simply select the document, check desired print settings and finishing options, then print.



SCAN SETTINGS AVAILABLE

File formats	Standard: TIFF, JPEG, PDF, PDF/A Optional: Searchable PDF, Searchable PDF/A, Editable DOC
Colour modes	Auto Colour, Full Colour, Grey Scale, Black.
Resolution (dpi)	100, 150, 200, 300, 400, 600.
Original mode	Text, Text/Photo, Photo.
Rotation (deg)	0, 90, 180, 270.
File name	Auto, freetext.
File size	Max 64MByte.

REQUIREMENTS

Toshiba e-STUDIO Multi-Function Printer (MFP) with e-BRIDGE Next architecture.

Microsoft SharePoint 2013/2016 on-premise.

OPTIONS

Embedded OCR for searchable or editable scan file formats.

PRINT SETTINGS AVAILABLE

File formats SharePoint	JPEG, PDF.
Sets	1-999.
Colour/Toner Mode	Auto Colour, Full Colour, Black, Erasable Blue.
2 - Sided	1-sided, Book, Tablet.
Staple	Upper Left, Upper Right.
Hole Punch	Middle Left, Centre Top.

Note: Scan and print settings available vary according to MFP model and configuration.



Want to know more go to <https://www.toshiba-business.com.au/apps/sop> or scan this QR code

Call Toshiba for more information
1300 794 202
www.toshiba-business.com.au

Kōdo® is a registered trademark of Toshiba (Australia) Pty Limited (ABN 19 001 320 421). Microsoft SharePoint are all registered trademarks of Microsoft Corporation or its subsidiaries in the United States and/or other countries. All other brands and/or product names are trademarks of their respective owners. Specifications are subject to change without prior notification Copyright ©2019 TOSHIBA (Australia).
TAP_Kodo_SharePoint_V3_1